

How to get to OTEAcademy

Pelika & Spartis,
151 22, Maroussi
Athens
Tel: +30 210 611 4430
Fax: +30 210 611 4420
www.oteacademy.gr
alu_oa@oteacademy.gr



A. From:

Eleftherios Venizelos International Airport:



Eleftherios Venizelos International Airport is located near the town of Spata, in the eastern Messoghia plain, about 35 km east of Athens.

By taxi:



The taxi queue starts from Door 4 of the Arrivals Level and extends up to Door 1.

Taxi services:

• Special Taxi Services (Mr. Costas Nikolopoulos)	0030 - 6974 459973
• Apollon:	0030 210 - 3636508 0030 210 - 3389055
• Express:	0030 210 - 9943000 0030 210 - 9934259
• Ikaros:	0030 210 - 5152800
• Kosmos:	0030 18300
• Asteras:	0030 210 - 8051996 0030 210 - 6144000
• Europe:	0030 210 - 5023783 0030 210 - 5023583
• Ermis:	0030 210 - 4115277 0030 210 - 4116892



By car:

If you want to rent a car you can find several car rental companies in the new Arrivals level at the Main Terminal Building.

- Take **Attiki odos.**
- Take **Exit 10A Plapouta Str.**
- At the first traffic lights turn right.
- Pass the round about to **Bironos str.**
- Drive straight and turn right at **Reas str.**
- You are at the back side of the building of OTEAcademy.
- Turn left and then right **(Spartis str)** and you'll see the parking lot (on your left) and the main entrance (on your right) of OTEAcademy.

Rental companies:

• A & Alfa Rent a Car	0030 210 - 2824100, 2816609
• ACE Rent a Car	0030 210 - 9680700
• Acropolis	0030 210 - 9319682
• AVIS	0030 210 - 35305789
• Apollo Rent a Car	0030 210 - 9242460
• Hertz	0030 210 - 6264000
• Europcar	801 -11-33334

- *Estimated cost by taxi: 30€*
- *Estimated time (by car or taxi): 30' minutes*

By public transport:



1. To OTEAcademy

- Proastiakos: Take the line "Airport- Neratziotissa - Kiato" and get off at the station "Neratziotissa"
- From the station "Neratziotissa" OTEAcademy is about 10 minutes on feet. *Details on the map.*

2. To Syntagma (centre of the city)

- Metro: Take the blue line "Airport-Egaleo" and get off at the station "Syntagma"

B. Coming to OTEAcademy from Syntagma (centre of the city):



Metro: Take the red line. Get off at "Attiki" station. Take the green line. Get off at Neratziotissa station. *Details on the map.*

or

Metro: Take the "blue line" Get off at Doukissis Plakentias station.

Take the "Suburban Railway" line "Airport - Neratziotissa - Kiato" and get off at the station "Neratziotissa" *Details on the map.*

Useful telephones

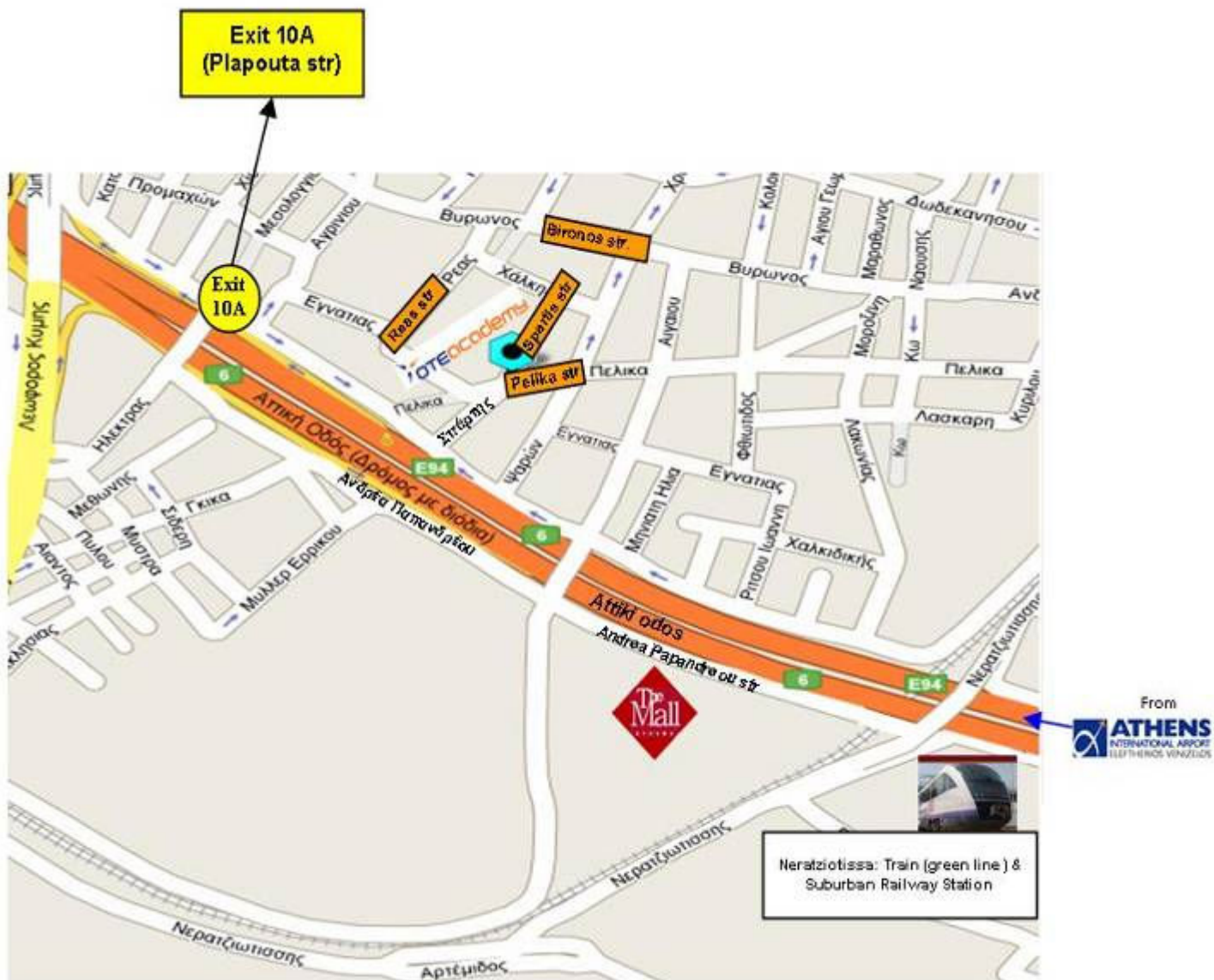
Airport El. Venizelos: 0030 210 3530000

International Emergency Call: 112

Suburban Railway Info: 1110 or 185, Website: www.proastiakos.gr

Metro Info: 210 - 6792399, Website: www.ametro.gr

National Directory Inquires (OTE) (exp. Embassies): 11888



ATHENS HOTELS

HILTON ATHENS

46 Vassilissis Sofias Avenue,
Athens, Greece 11528
Tel: 30-210-7281000
Fax: 30-210-7281111
Website: www.athens.hilton.com

CROWNE PLAZA ATHENS

50 Mihalakopoulou Ave, 11528
Athens, Greece
Tel: +30 210 7278000
Fax: +30 210 7278600
Website: www.ichotelsgroup.com

HOLIDAY SUITES

4, Arnis St, 11528

Athens, Greece

Tel: +30 210 7278690

Fax: +30 210 7278696

Website: www.ichotelsgroup.com

STRATOS VASSILIKOS HOTEL

114, Michalakopoulou str.,

115 27 Athens, Greece

Tel: +30 210 7706611

FAX: +30 210 7708137

Website: www.airotel.gr

FRESH HOTEL ATHENS

26 Sofokleous Str.,

105 52, Athens, Greece

Tel: +30 210 5248511

Fax: +30 210 5248517

Website: www.freshhotel.gr

***THE ATHENIAN CALLIRHOE
EXCLUSIVE HOTEL***

32, Kallirois Ave. & Petmeza,

117 43 Athens, Greece

Tel. +30 210-9215353,

Fax: +30 210-9215342

Website: www.tac.gr

TITANIA HOTEL

52, Panepistimiou Ave.

10678, Athens Downtown, Greece

Tel: +30 210 332 6200

Fax: +30 210 330 0700

Website: titania@titania.gr

DIVANI CARAVEL HOTEL

2, Vas. Alexandrou Avenue,

16121 Athens, Greece

Tel: +30 210 7207000

Fax: +30 210 7236683

Website: www.divanis.gr

ELECTRA PALACE HOTEL ATHENS

18-20, N.Nikodimou Str

10557 Athens, Greece

Tel: +30 210 33 70 000

Fax: + 30 210 32 41 875

Website: www.electrahotels.gr

ELECTRA HOTEL ATHENS

5, Ermou Str.
10563 Athens, Greece
Tel: +30 210 33 78 000
Fax: + 30 210 32 20310
Website: www.electrahotels.gr

ESPERIA HOTEL

22, Stadiou Str.
105 64 Athens, Greece
Tel: +30 210 3238001
Fax: +30 210 3238100
Website: www.esperiahotel.com.gr

BABY GRAND HOTEL

65, Athinas & Lycourgou Str.
105 51 Athens, Greece
Tel: +30 210 3250900
Fax: +30 210 3250920
Website: www.classicalhotels.com

KING GEORGE PALACE

3, Vas. Georgiou A' Street
10564 Athens, Greece
Tel: +30 210 3222210
Fax: +30 210 3250504
Website: www.classicalhotels.com

NJV ATHENS PLAZA

Vas. Georgiou A' Street & Stadiou
10564 Athens, Greece
Tel: +30 210 3352400
Fax: +30 210 3235856
Website: www.classicalhotels.com

HOTEL GRANDE BRETAGNE

Constitution Square
10563 Athens, Greece
Tel: +30 210 3330000
Fax: +30 210 3228034
Website: www.grandebretagne.gr